

CA92050-CG-PM 2kHz Fast Swept Tunable Laser Source

(Version 3.00)

Technical Specifications Ver 3.00
Aug., 2019



 **CA Optronics Group INC.**

www.caoptronicsgroup.com

CA92050-CA-PM 2 kHz Fast Swept Tunable Laser Source

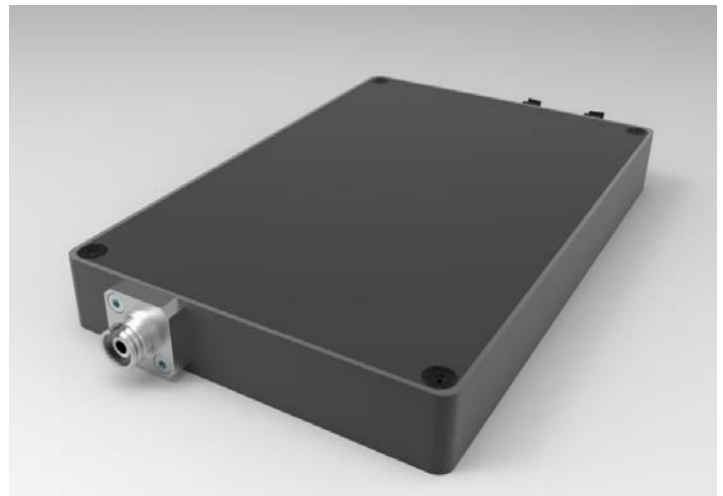
The CA92050-CA-PM 2 kHz fast swept tunable laser modules offer superior performance for the test of Fiber Vibration Sensing, DWDM components, AWG , WSS, OPM components, Fiber sensing(especially for vibration fiber sensing application) , optical amplifiers, and other general purpose of fiber optical test and measurement with high wavelength resolution applications.

Each of CA92050-CG-PM tunable laser modules is connected to a PC with RS232 cable. It becomes a High Accuracy, High Power, Small Dimension, Fast Startup, Affordable Tunable Laser Source system. It provides C band tunable laser sources options. CA OPTRONICS GROUP also provide modules control software. The module also can be integrated into customers' products system with RS232 interface control.

The CA92050-CG-PM swept lasers are widely deployed in FBG sensing systems and passive component test systems.

1. Key Features

- Wavelength Range C-band
- High Output Power
- Low Power Consumption
- Wide Operating Temperature Range
- Fast Swept Speed
- Simple Interface
- High Stability



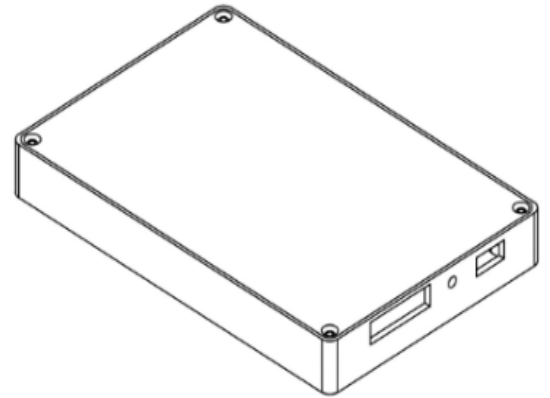
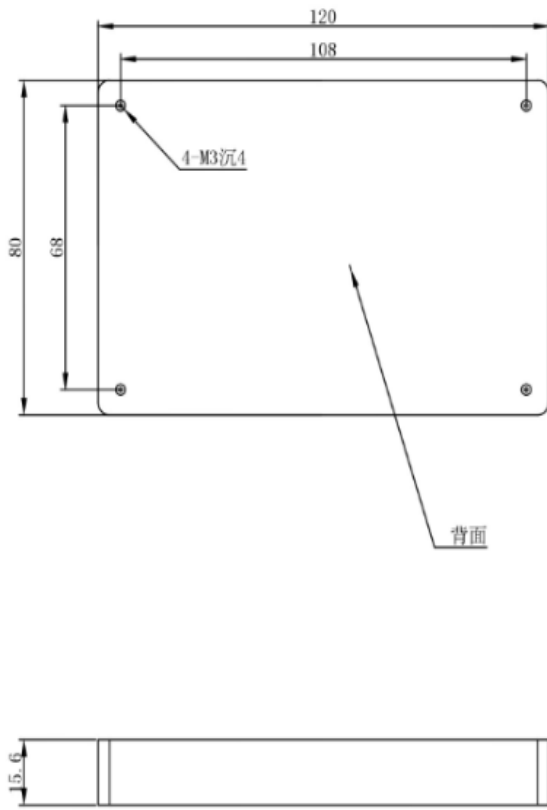
2. Applications

- Fiber Grating Sensor Interrogator System
- Optical Passive Components test system
- Scanning Spectrometer
- Laser Ranging

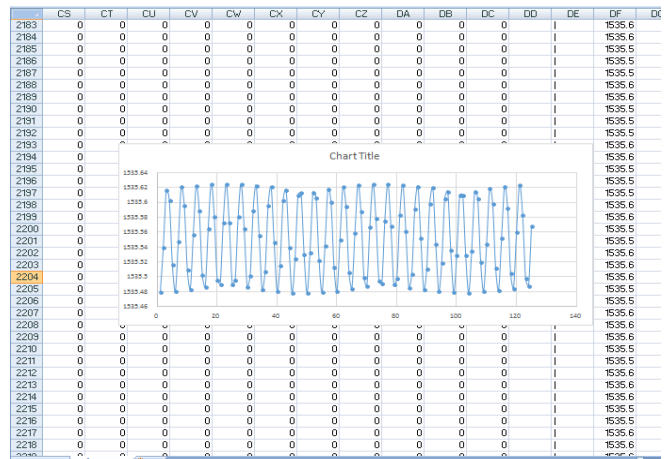
3. Technical Specifications

Model No.	CA92050-CG-PM
Wavelength Range	40 nm for C-band (From 1528 – 1568 nm)
Optical Power	20 mW
Resolution	1 GHz
Absolute Wavelength Accuracy	+/-10 pm Typ<5 pm
Relative Wavelength Accuracy	+/-5 pm Typ+/-2 pm
Wavelength Repeatability	+/-2 pm Typ+/-1 pm
Wavelength Stability(-5 to 55 °C)	<+/-2 pm
Sweep Speed	2KHz(Max)
Default Sweep Step	1 GHz
Power Stability	+/- 0.05 dB
Spectral Flatness	<0.5 dB
Line'width	<= 2.0 MHz
SMSR	>40 dB
RIN	< -135 dB/Hz
Power Supply	+5 V / 3 A
Linewidth	<5 MHz Typ 1 MHz
Trigger Interface	LVTTL
Communication Interface	RS232 or TTL
Dimension	118mm x 72mm x 15.6mm
Fiber Adaptor	2.0 mm Key Slot PM FC/APC
Working Temperature Range	-10 to 55 °C

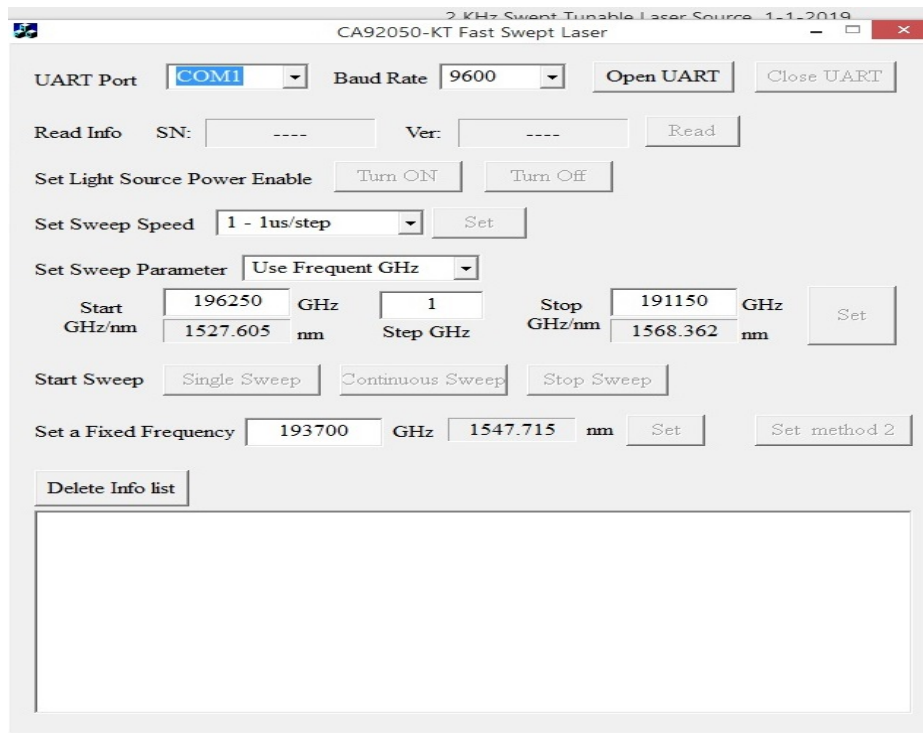
4. Dimensions



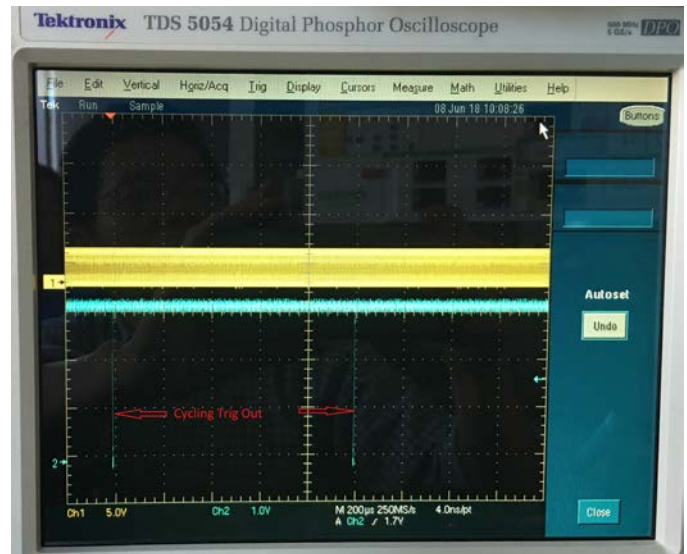
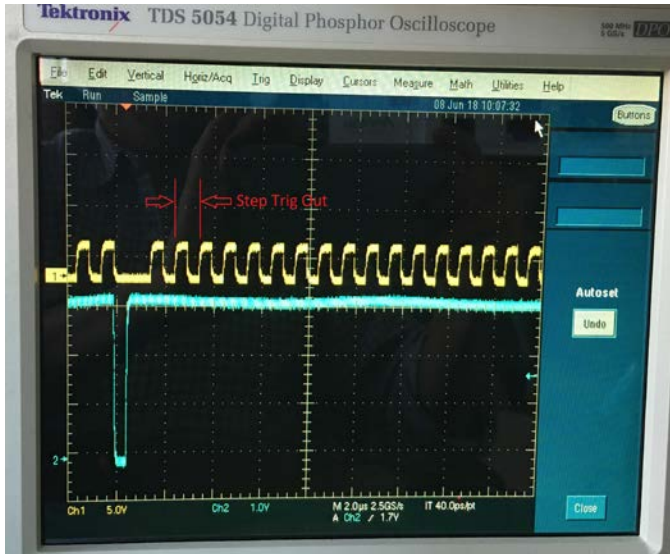
Vibration Fiber Sensing Test Data Sample (Cell Phone Ring Tone):



Computer GUI Interface:



Trig Out Signal:



Contact Information

United States:
CA OPTRONICS GROUP INC

3652 Edison Way
 Fremont, CA 94538
 USA

Tel: 1-510-366-7353
 Fax: 1-510-795-1795

www.caoptronicsgroup.com

Product specifications and descriptions in this documentation subject to change without notice.

Copyright © 2008 CA OPTRONICS GROUP INC.

Nov., 2018

71000060 V3.00

Product specifications and descriptions in this documentation subject to change without notice.

Copyright © 2008-2021 CA OPTRONICS GROUP.